

Bothers.Me is a website where you can report and follow suggestions and issues for products you love. It's 100% free.

### Here's how it works



Company fixes an issue

## Sign Up to Bothers.me

### Basic

- Create new issues bothered you
- Vote for most annoying issues
- Add workarounds to help others

Free

Sign Up

### Company

- Review issues users posted
- Resolve issues
- Add workarounds and explain how it work

Free

Sign Up

Recent Popular

EOS 6D

### Is too heavy, hard to

Whenever, I go out of bluetooth

Vote 3

AF 18-200 mm f/3.5-6.3 XR Di II LD Aspherical (IF)

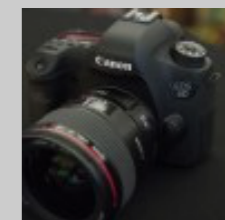
### If you are not in very bright light, any photo taken at over 100mm will come out pretty dark if...

Vote 3



Status: OPENED

Workarounds: 2



EOS 6D

### Stopped working

The first sign was that the wifi stopped working, then the whole camera stopped working altogether.

Vote 3



Status: OPENED

Workarounds: 2



C

### Should use standard micro USB charger

The camera should use a standard micro USB for charging. This would be easier to replace.

Vote 3



Status: OPENED

Workarounds: 2



EOS 6D

### Is too heavy, hard to always have with me.

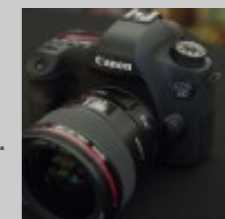
Whenever, I go out of bluetooth range, the device disconnects, and then never reconnects once I reenter range. This makes the watchThis makes the ...

Vote 3



Status: OPENED

Workarounds: 2



EOS 6D

### Is too heavy, hard to always have with me.

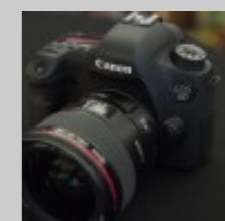
Whenever, I go out of bluetooth range, the device disconnects, and then never reconnects once I reenter range. This makes the watch...

Vote 3



Status: OPENED

Workarounds: 2





# Canon Inc.

[www.canon.com](http://www.canon.com)

is a Japanese multinational corporation specialized in the manufacture of imaging and optical products, including cameras, camcorders, photocopiers, steppers, computer printers and medical equipment. Its headquarters are located in Ōta, Tokyo, Japan.

Edit profile

Issues  
145

resolved  
59

workarounds  
0

products  
61

Search your company issues



EOS 6D

## Is too heavy, hard to always have with me

Whenever, I go out of bluetooth range, the device disconnects, and then never reconnects once I reenter range. This makes the watch...

Vote 3

Mark as Resolved



Workarounds: 2



AF 18–200 mm f/3.5–6.3 XR Di II LD Aspherical (IF)

## If you are not in very bright light, any photo taken at over 100mm will come out pretty dark if...

Vote 3

Mark as Resolved



Workarounds: 2



EOS 6D

## Stopped working

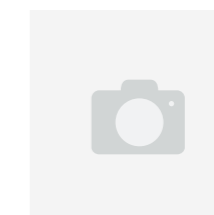
The first sign was that the wifi stopped working, then the whole camera stopped working altogether.

Vote 3

Resolved



Workarounds: 2



C

## Should use standard micro USB charger

The camera should use a standard micro USB for charging. This would be easier to replace.

Bothers Me 9999

Mark as Resolved



Workarounds: 2



EOS 6D

## Is too heavy, hard to always have with me.

Whenever, I go out of bluetooth range, the device disconnects, and then never reconnects once I reenter range. This makes the watchThis makes the ...

Vote 3

Mark as Resolved



Workarounds: 2



EOS 6D

## Is too heavy, hard to always have with me.

Whenever, I go out of bluetooth range, the device disconnects, and then never reconnects once I reenter range. This makes the watch...

Vote 3

Mark as Resolved



Workarounds: 2





# Canon Inc.

[www.canon.com](http://www.canon.com)

is a Japanese multinational corporation specialized in the manufacture of imaging and optical products, including cameras, camcorders, photocopiers, steppers, computer printers and medical equipment. Its headquarters are located in Ōta, Tokyo, Japan.

Edit profile

Issues  
145

resolved  
59

workarounds  
0

products  
61

Search your company issues



EOS 6D

## Is too heavy, hard to always have with me

Whenever, I go out of bluetooth range, the device disconnects, and then never reconnects once I reenter range. This makes the watch...

Vote 3

Mark as Resolved



Workarounds: 2



AF 18–200 mm f/3.5–6.3 XR Di II LD Aspherical (IF)

## If you are not in very bright light, any photo taken at over 100mm will come out pretty dark if...

Vote 3

Mark as Resolved



Workarounds: 2



EOS 6D

## Stopped working

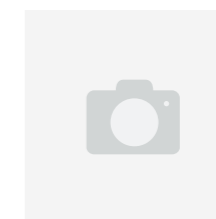
The first sign was that the wifi stopped working, then the whole camera stopped working altogether.

Vote 3

Resolved



Workarounds: 2



C

## Should use standard micro USB charger

The camera should use a standard micro USB for charging. This would be easier to replace.

Bothers Me 9999

Mark as Resolved



Workarounds: 2



EOS 6D

## Is too heavy, hard to always have with me.

Whenever, I go out of bluetooth range, the device disconnects, and then never reconnects once I reenter range. This makes the watchThis makes the ...

Vote 3

Mark as Resolved



Workarounds: 2



EOS 6D

## Is too heavy, hard to always have with me.

Whenever, I go out of bluetooth range, the device disconnects, and then never reconnects once I reenter range. This makes the watch...

Vote 3

Mark as Resolved



Workarounds: 2





# Canon Inc.

[www.canon.com](http://www.canon.com)

is a Japanese multinational corporation specialized in the manufacture of imaging and optical products, including cameras, camcorders, photocopiers, steppers, computer printers and medical equipment. Its headquarters are located in Ōta, Tokyo, Japan.

Edit profile

Issues  
145

resolved  
59

workarounds  
0

products  
61

Search your company issues



## Describe why you close the issue



EOS 6D: Is too heavy, hard to always have with me

We fix that issue in the new release 0.2.2

Close

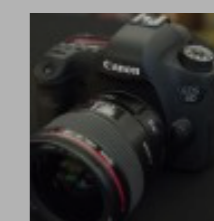
Resolve issue

EOS 6D

### Is too heavy, hard to

Whenever, I go out of bluetooth

Vote 3



AF 18–200 mm f/3.5–6.3 XR Di II LD Aspherical (IF)

### If you are not in very bright light, any photo taken at over 100mm will come out pretty dark if...

Vote 3

Mark as Resolved



Workarounds: 2



EOS 6D

### Stopped working

The first sign was that the wifi stopped working, then the whole camera stopped working altogether.

Vote 3

Resolved



Workarounds: 2



C

### Should use standard micro USB charger

The camera should use a standard micro USB for charging. This would be easier to replace.

Bothers Me 9999

Mark as Resolved



Workarounds: 2



EOS 6D

### Is too heavy, hard to always have with me.

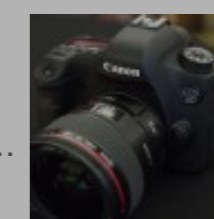
Whenever, I go out of bluetooth range, the device disconnects, and then never reconnects once I reenter range. This makes the watchThis makes the ...

Vote 3

Mark as Resolved



Workarounds: 2



EOS 6D

### Is too heavy, hard to always have with me.

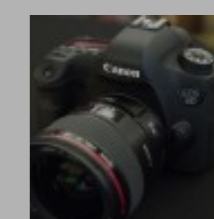
Whenever, I go out of bluetooth range, the device disconnects, and then never reconnects once I reenter range. This makes the watch...

Vote 3

Mark as Resolved



Workarounds: 2





## Canon Inc. / Profile

Edit your company name, logo, etc.

[Profile](#) [Password](#)

**Company Name**

Canon Inc.

**Website**

www.canon.com

**Email**

messages@canon.com

**Description**

is a Japanese multinational corporation specialized in the manufacture of imaging and optical products, including cameras, camcorders, photocopiers, steppers, computer printers and medical equipment. Its headquarters are located in Ōta, Tokyo, Japan.

Save

### Your Logo



Change

Delete





## Sign Up as company

Provide your company name, logo, etc.

Email

messages@canon.com

Password

strongpassword



Company Name

Canon Inc.

Website

www.canon.com

Description

is a Japanese multinational corporation specialized in the manufacture of imaging and optical products, including cameras, camcorders, photocopiers, steppers, computer printers and medical equipment. Its headquarters are located in Ōta, Tokyo, Japan.

[Create Account](#)

### Your Logo



[Add](#)



## Canon

www.canon.com

Issues: 145

Workarounds: 0

Products: 0

[Report New Issue](#)

### Canon Issues

[Canon](#) > [EOS 6D](#)

#### Is too heavy, hard to always have with me

Whenever, I go out of bluetooth range, the device disconnects, an...



Status: OPEN

Workarounds: 2

Bothers me **6**



[Tamron](#) > [AF 18–200 mm f/3...](#)

#### If you are not in very bright light, any photo...



Status: RESOLVED

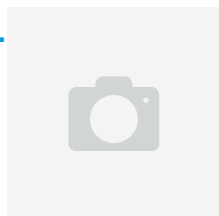
Workarounds: 2

Bothers me **9999**



[Tamron](#) > [AF 18–200 mm f/3...](#)

#### Do not work correct



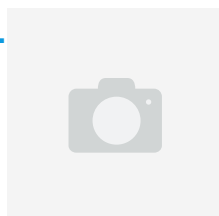
Status: OPEN

Bothers me **6**



[Tamron](#) > [AF 18–200 mm f/3...](#)

#### Do not work correct



Whenever, I go out of bluetooth range, the device disconnects, a...

Status: RESOLVED

Bothers me **6**

